



## FIREGUARD PORTABLE FIRE EXTINGUISHER STAND

### PORTABLE FIRE EXTINGUISHER STAND:

SAFE-T-SYSTEMS Fire Guard portable fire extinguisher stands, are an ideal solution to the common problem of locating fire extinguishers on job sites, project areas, and remote working environments.

Fire Guard fire extinguisher stands are approximately 43 inches in height with a 20in x 20in base, and can be bought in 2 cabinet sizes, which houses a standard 10 lb, or 20 lb fire extinguisher. Those different sizes weigh 33.5 and 35 lbs. respectively.

Assembling the unit is easy. You only need 1 minute of time and a phillips head screw driver. Cabinets are equipped with locks to prevent fire extinguisher theft and improper use. These stands are highly visible in dark areas making it easy to find your fire extinguisher in a time of need.

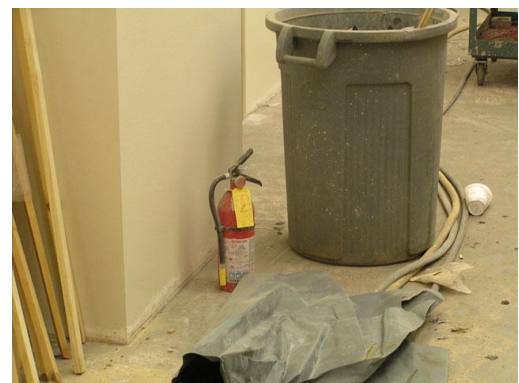
These fire extinguisher stands help you save time and money by reducing costs of materials and time it takes to build a jobsite stand. These FireGuard stands also allow you to easily move your fire extinguishers from job to job. They can be broken down and stacked to allow for easy shipping from jobsite to jobsite, or jobsite to your storage facility.



<u>Model:</u>	<u>Description:</u>	<u>Weight:</u>
100FG	10 lb. Fire Guard Stand	34 lbs.
200FG	20 lb. Fire Guard Stand	35 lbs.



WHAT WILL REPRESENT  
 YOUR  
 COMPANY?





# Safe-T-Systems

## PLASTIC CABINETS



**FIRE EXTINGUISHER CABINETS** work well indoors and out. They have no sharp edges or hazardous glass to worry about, and they won't rust, dent, or fade, regardless of the weather. Cabinets are available in red or white.

### Features

- Cabinet and frame are injection molded of high-impact polystyrene with ultraviolet light inhibitors
- Break front features clear poly "glass" panel with screen printed instructions
- Break front is also scored for easier breakage
- Non-corroding cylinder lock and key
- Includes molded break hammer with brass striker, easy-grip handle, and polymer coated stainless steel aircraft cable for secure attachment
- Cabinets nest for easy storage and lower freight costs
- All parts are interchangeable with Cato Chief Cabinets

P/N	CABINET MINIMUM INSIDE DIMENSIONS						CABINET WITH COVER MAXIMUM OUTSIDE DIMENSIONS					
	HEIGHT		WIDTH		DEPTH		HEIGHT		WIDTH		DEPTH	
	in.	mm.	in.	mm.	in.	mm.	in.	mm.	in.	mm.	in.	mm.
100C	20 <sup>5</sup> / <sub>8</sub>	524	6 <sup>3</sup> / <sub>4</sub>	171	6	152	23 <sup>3</sup> / <sub>8</sub>	594	9 <sup>3</sup> / <sub>8</sub>	238	7 <sup>1</sup> / <sub>4</sub>	184
200C	24 <sup>3</sup> / <sub>4</sub>	629	8 <sup>1</sup> / <sub>2</sub>	216	8 <sup>7</sup> / <sub>8</sub>	225	28 <sup>3</sup> / <sub>8</sub>	721	11 <sup>3</sup> / <sub>8</sub>	289	10 <sup>1</sup> / <sub>8</sub>	257